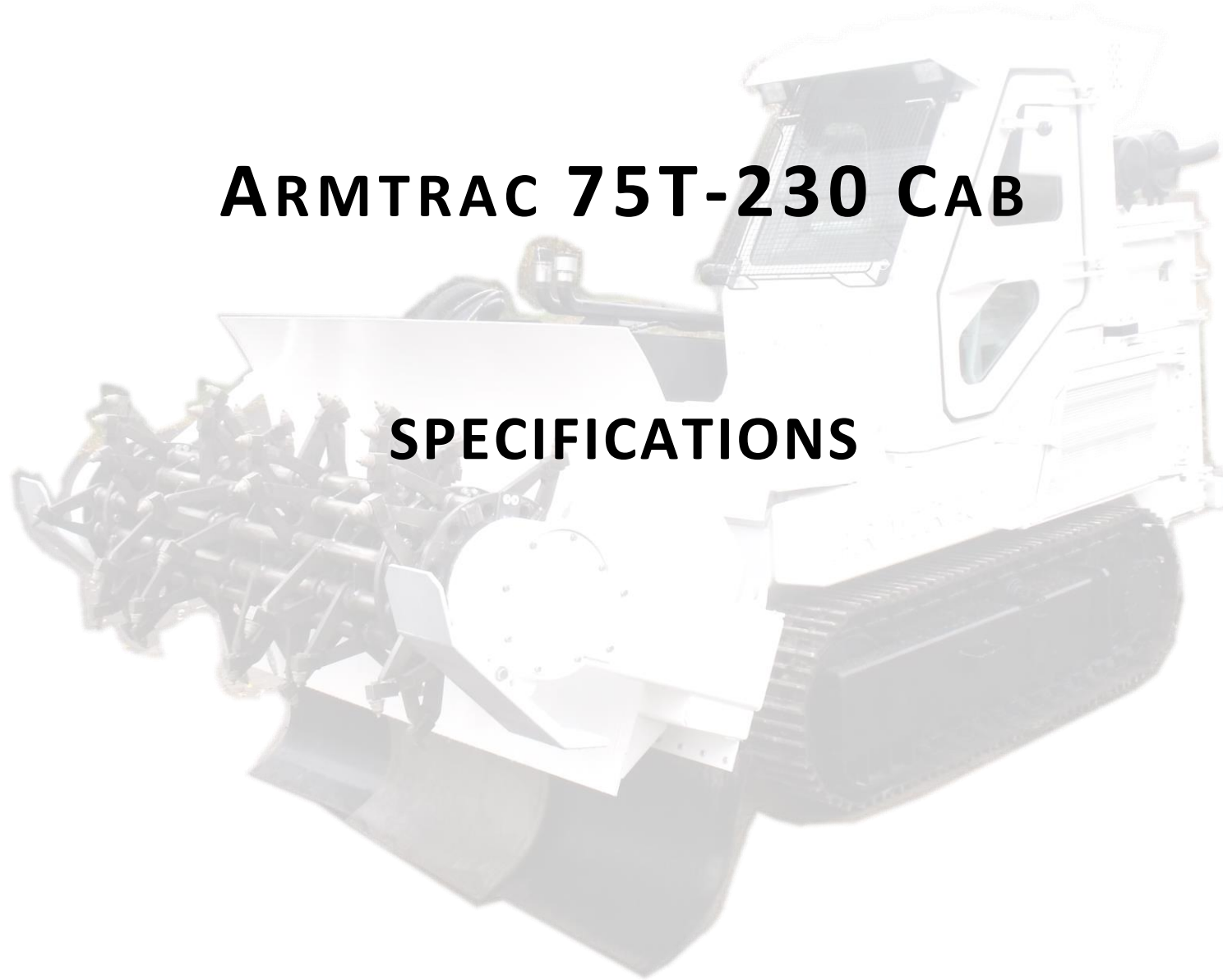
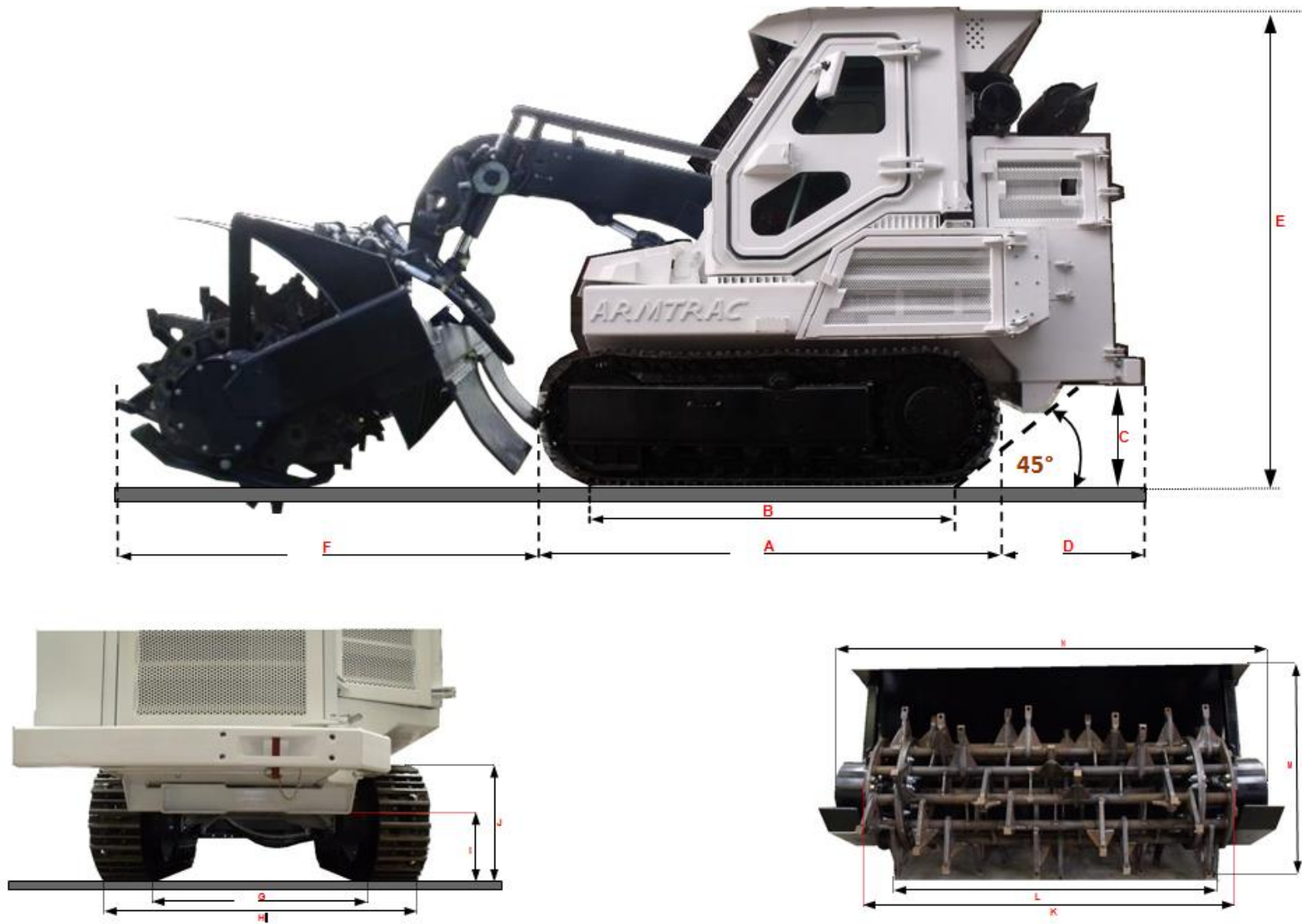




ARMTRAC 75T-230 CAB

SPECIFICATIONS







STATIC DIMENSIONS

A	Track length (Diameter)	3091 mm
B	Track Footprint	2562 mm
C	Under Carriage Height	445 mm
D	Overhang (Rear) – Excl. lifting eye	675 mm
E	Overall Height	2308 mm
F	Header Length	1578 mm
G	Track width – inside	1423.5 mm
S	Boom clearance	444 mm

H	Track width – outside	2023.5 mm
I	Ground clearance	325 mm
J	Track Height	600 mm
K	Tiller / Flail Width	2260 mm
L	Tiller / Flail Clearance Width	1768/1956 mm
M	Header – Overall Height	1333 mm
N	Header – Overall Width	2758 mm
	Overall Machine Length (Excl. Tool)	3630 mm
	Overall Machine Width (at widest points)	2080 mm

WEIGHTS & FLUID CAPACITIES

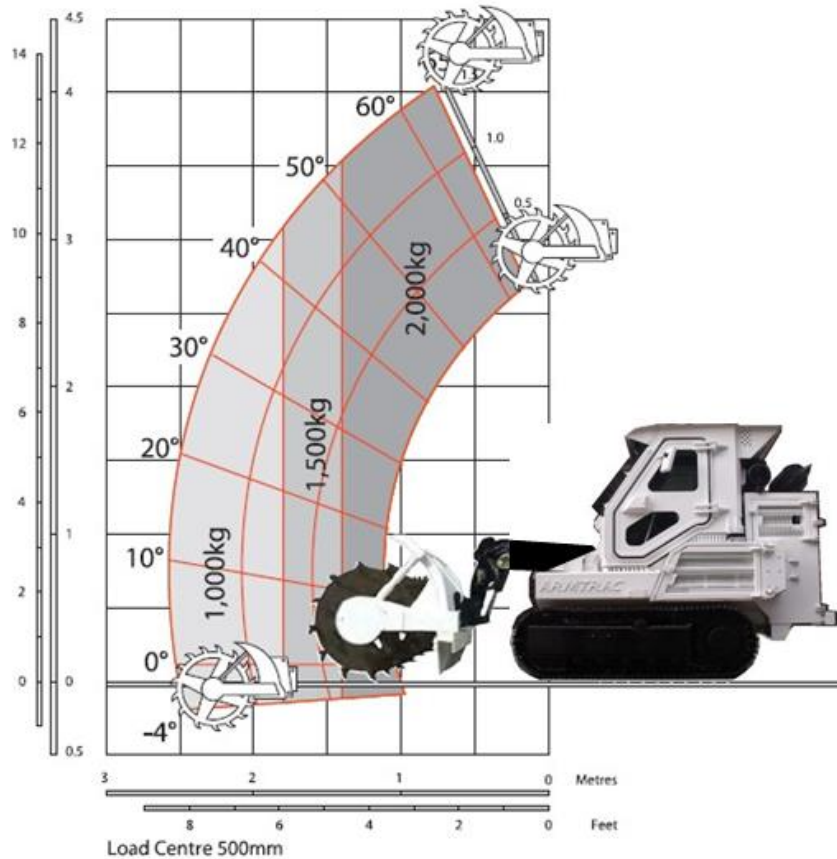
WEIGHTS

Superstructure	9035.5 Kg
Cab	1685 kg
Header (Tiller)	3012 kg
Header (Flail)	2100 Kg
Fuel Weight (Factor: 0.832kg/litre) (286 litres)	235 kg
Engine Oil (Factor: 0.87kg/litre)	24 kg
Coolant (Factor: *1kg/litre)	30 kg
Hydraulic Oil (Factor: 0.78kg/litre)	248 kg
Track & Splitter Boxes (Factor: 0.87kg/litre)	13 kg

FLUID CAPACITIES

Fuel (Diesel)	286 litres*
Engine Oil (Incl. filters)	26.5 litres
Engine Water Coolant (excl. Power Pack cooler)	7.3 litres
Water Coolant (Deutz Power Pack cooler)	22.7 litres
Hydraulic Oil	318 litres
Track Gearbox	5 litres
Splitter Box	10 litres
* Volumetric Calculation	

* At sea level.



LIFT PERFORMANCE 75T-230

Machine model	75T-230
Lift capacity at full height	2700kg
Lift capacity at full reach	1700kg
Lift height	4025mm
Maximum forward reach (Including Header)	2515mm

ENGINE

Latest technology & advanced design provides low fuel consumption, reduced noise, high torque & power output with total reliability ensuring minimal maintenance.
 Two-stage dry type air filters with primary & safety elements.

Manufacturer	Deutz
Model	TCD2013L6 2v
Maximum torque	1050 N.m (ISO 14396)
No of cylinders	6
Maximum rating @2300 RPM	258 HP
Maximum RPM	2300
Aspiration	Turbo / intercooled
Power Rating	
Power @ 2000 RPM	250 HP
Fuel consumption	25 – 32 Ltrs / Hr
Water coolant operating temperature	45° (Ambient)

TRACK DRIVE

Type: Fully hydrostatic Two-speed
 Travel motors: Variable swash axial piston type, fully guarded within under-carriage frame
 Final drive: Planetary reduction, bolt-on sprockets.
 Travel speed: High – 10.34 km/h continuous.
 Travel effort: 55K/Newton.

BRAKES

Service brakes: Hydraulic counter balance valve, to prevent over-speed on gradients.
 Parking brake: Disc type, spring applied- hydraulic release.

ELECTRICS

24 Volt negative earth. 145 Amp Hr battery. 55 Amp alternator. Full road lighting.
 Reversing light. Horn. Reverse alarm. Fully remote controlled.

STEERING

One lever 4 position joystick control (hardwired & remote control) Forward Reverse left & Right.
 Left & Right position allows one track to turn in one direction while the other turns in the
 Opposite direction, allowing the machine to turn through 360 degrees while remaining on the
 Spot.



BOOM & CARRIAGE

The boom is manufactured of high tensile steel that can extend & retract & has a quick fit self-levelling carriage with a lever operated pin locking system. This allows the Armtrac 75T-230 to be a multi-function machine for de-mining as well as loading & lifting of heavy objects with standard fork-lift tines. Low maintenance & hard wearing pads are fitted to the boom. One boom end auxiliary hydraulic service lines fitted as standard.

SAFETY CHECK VALVES

Fitted to carriage tilt, telescopic & boom lift rams.

HYDRAULICS

Operating @ 2000 RPM	Relief valve settings	Maximum Flow
Variable displacement pumps		
Flail / Tiller	350 bar	350 L/min
Track per track	350 bar	140 L/min
Gear pumps		
Auxiliary	250 bar	60 L/min
Oil cooler fan	100 bar	30 L/min
Water cooler fan	100 bar	30 L/min

FILTRATION

The hydraulic components are protected by the highest standard of filtration to ensure long fluid & component life.

Inside tank	90 micron suction strainer
Main return line	25 micron paper elements
Drive lines	10 micron pressure filter

CLEARANCE CAPACITY

	Tiller	Flail
Rotation speed	350RPM (Nominal) 400RPM (Max)	600RPM (Nominal) 800RPM (Max)
Clearance speed	Light soil medium vegetation Medium soil medium vegetation Heavy soil dense vegetation Maximum working depth	1700m ² /Hr 780m ² / Hr 530 m ² / Hr 35cm

Explosive charge tested to 8.8kg – replace some picks / chains.

UNDER CARRIAGE

Construction	Fully welded X frame type central belly guarding	
Upper & lower rollers	Heat treated sealed & lubricated	
Track adjustment	Grease cylinder type.	
Track idler	Sealed & lubricated with coil spring	
Cushioned recoil	Spring	2
Track shoe	450mm triple grouser	
Roller per side	Upper rollers	1
	Lower rollers	7
	Track shoes per side	34

OPTIONS & ACCESSORIES

Options:
 Multipurpose bucket / blade, fork-lift tines, back hoe, standard bucket, tool box, Armtrac sifter

HYDRAULIC CYLINDERS

Double acting type, with bolt up end caps & hardened steel bearing bushes.
 Hose burst check valves & Accumulators fitted to carriage ram for cushioning against Anti-Tank mine blast pressure.