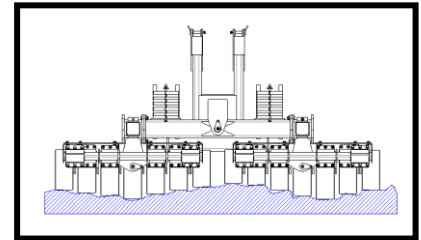




The Armtrac Roller System is designed to protect vehicles from the effects of victim operated devices and provides a level of confidence when proving routes for the presence of mines and IEDs. It can be used at up to 50 KPH when fitted to the Armtrac 100 and at lower speed with tracked Armtrac vehicles but another self-weight version of the Roller System can also be used with APCs or MBTs.

It is intended for use when there is a possibility, rather than a probability, of a victim operated device on an intended route.

This is a full width proving device using two wheel

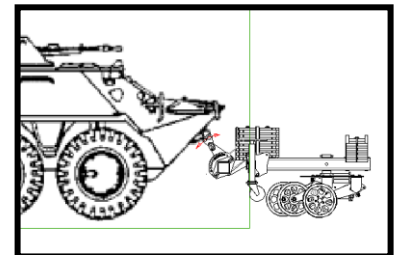


banks each comprising of 7 rollers. Each roller wheel is made from a polyurethane composite and is puncture proof. The steering system can articulate the Armtrac Roller left or right allowing the system to negotiate moderate corners while still protecting the full width of the prime mover; its linkage arrangement allows each roller wheel to articulate over undulating terrain. Left and right roller banks (of 7 rollers) are identical and interchangeable; they swivel a complete 360 degrees when reversing without interfering with each other. In the event of a significant explosive event, the complete roller bank sheers off the main frame at the weakest point and can be easily replaced by another roller bank. Smaller explosions will only damage a roller which can be replaced.

Specifications of Roller System with Armtrac Vehicle	
Weight	2,200 Kg
Total weight with Vehicle	4,200 Kg
Full width clearance	3.59 m
Average force per roller	300 Kg
Operating Speed Range	0 – 50 KPH

When used with the Armtrac 100 or other Armtrac tracked variants, hydraulic power from the host vehicle is used to transfer up to 2000 Kg of weight onto the roller wheels in order to generate sufficient force to trigger any victim operated devices present. When not route proving, the rollers can be lifted off the ground to provide greater speed and flexibility.

The self-weight version used with APCs and MBTs is identical to the weight assisted version except that it carries additional weights up to 3 tons. Additional weights can be added or removed to/from both variants depending on both the threat and the terrain. There are different methods of connecting to the prime mover using vertically adjusted ratchets with either flange pins or D shackles



For further information & specifications on the Armtrac Sifter contact [steve@armtrac.net](mailto:steve@armtrac.net) or visit our website at [www.armtrac.net](http://www.armtrac.net)

