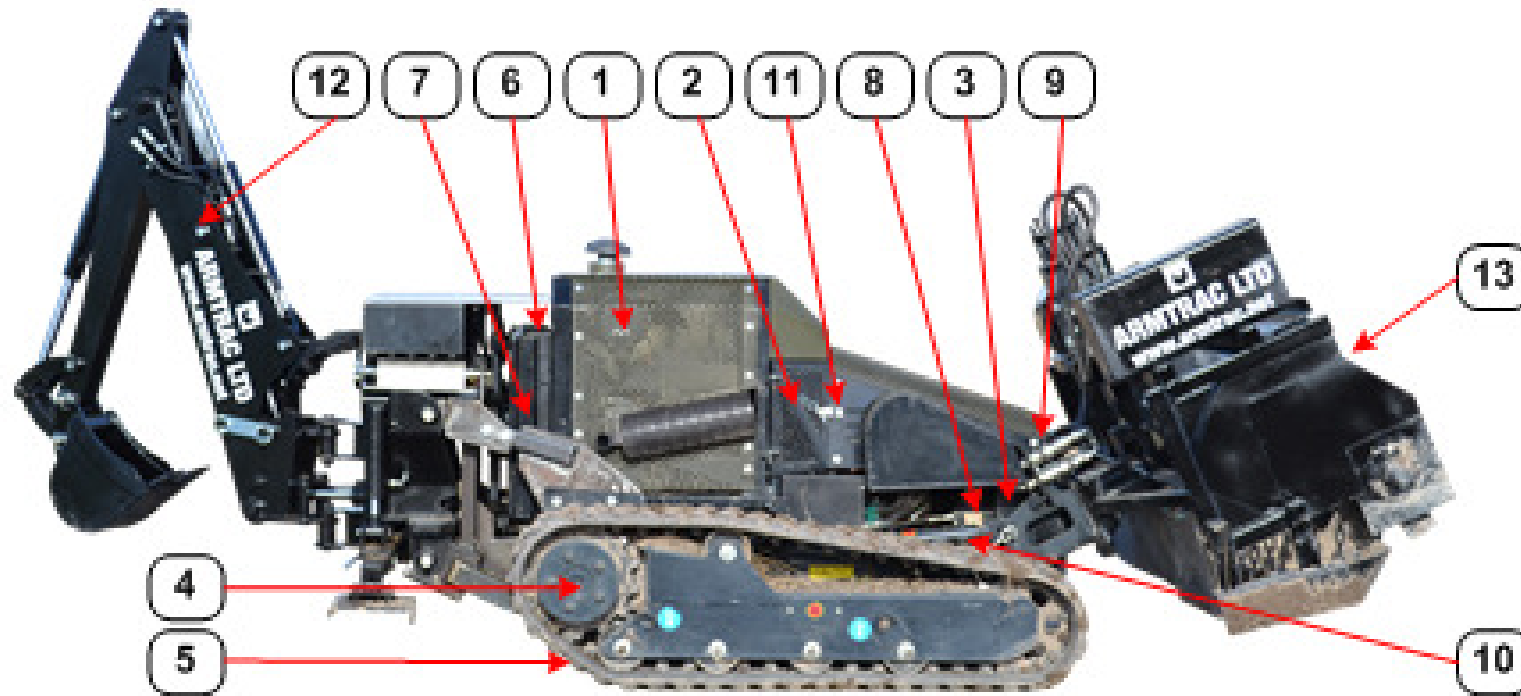
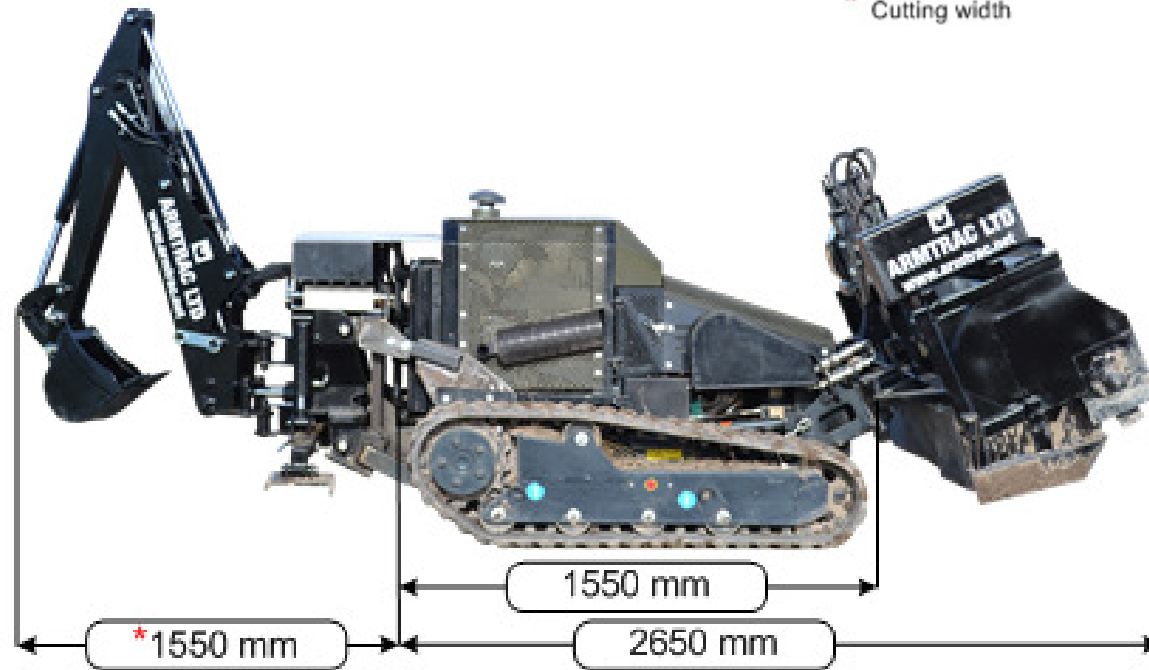
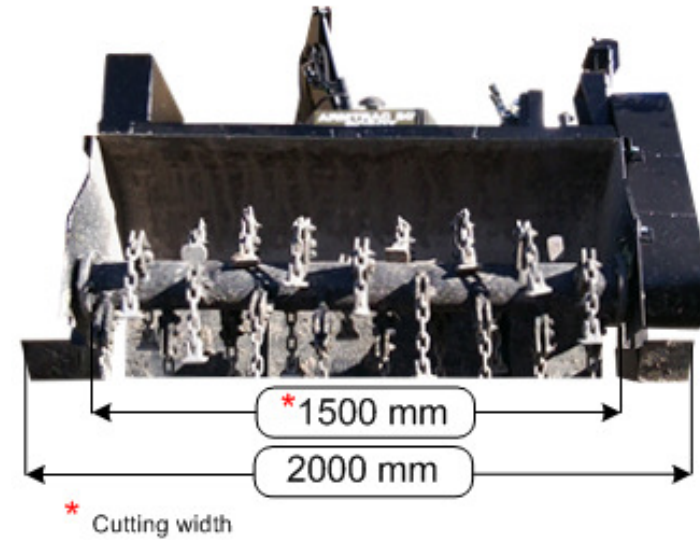
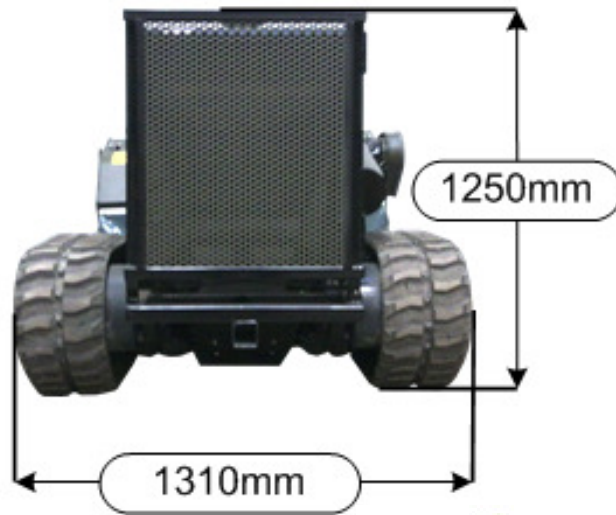




**Machine Features**

- |  |   |                                |
|--|---|--------------------------------|
| 1. 40hp (29kW) 3 cylinder Isuzu engine | 6. High capacity water radiator           | 11. Quick access for servicing |
| 2. Ignition panel with warning system  | 7. Self-cleaning reversible fan           | 12. Rear backhoe               |
| 3. 21 litre fuel tank capacity         | 8. Hydraulic oil reservoir                | 13. 1,5 meter flail system     |
| 4. Tracks hydraulically driven         | 9. Independent cooling for hydraulics     |                                |
| 5. Self-tightening tracks              | 10. Double acting ram (attachment height) |                                |



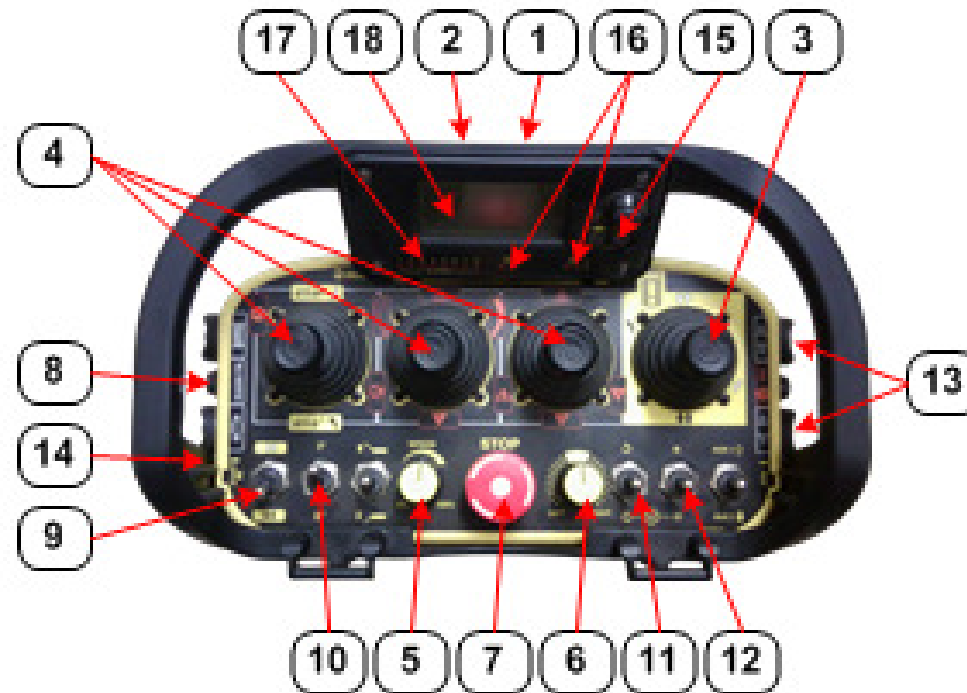


\* Withdrawn / retracted to it's minimum size.  
(for packing / shipping / transport requirements)



## Remote Features

1. 1 km working range with built-in antenna
2. Radio frequency CE certified
3. Proportional joystick drive controls
4. Proportional joystick utility controls
5. Potentiometer speed control
6. Steering bias (Trim) – for working on slopes
7. Emergency stop (instant mechanical + electrical safety isolation)
8. Quick clean fan – removes dust & debris by reversing airflow
9. Direction control swap – reverses steering when moving backwards
10. Two (2) speed control – High / Low range
11. Rotor direction control
12. Soft-start rotor engagement & speed control
13. Engine RPM control
14. Engine start – with safety warning hooter
15. Battery & remote link status indicators
16. Rotor 'On' & direction indications
17. System warning lights
18. LCD display – indications of critical machine systems (oil press, etc.)





**ENGINE**

Make	Isuzu, naturally aspirated, 3 cylinder	1642 cm <sup>3</sup>
HP	40 hp (29kW)	@ 3000 RPM (Maximum)
Torque	104 Nm	
Fuel	Diesel	
Fuel Tank Capacity	21 litres	
Fuel consumption (maximum)	6.5 litres per hour	Dependent on workload
Water cooled – Radiator	Standard	
Self-cleaning (Reversible fan)	Standard	
Transmission	Hydrostatic	
Noise Levels	105 dBs	Acoustic power level = dB (A) LWA

**HYDRAULICS**

Independent flail head circuit	Closed circuit piston hydraulic system	57 litres per minute @ 3000 RPM (Maximum)
Independent track drive circuit	2 X closed circuit hydraulic piston pumps	
Auxiliary service	1 double acting auxiliary service	15 litres per minute @ 180 BAR, double acting
Independent intercooler	Standard	
Oil tank capacity	16 litres (30 litres in whole system)	Hydraulic 68
Attachment lifting capability	320 kg	

**HEADER**

Oil flow	50 litres per minute
Pressure	320 BAR
Rotor speed	400 RPM
Flails	Hammer chain flails (33 individual flails)
Header width	2000mm
Flail diameter	800mm
Cutting height range (vegetation cutting)	20mm, 60mm, 85mm
Hydraulic lift	-300mm to +400mm
Floatation (Angle)	14° up & down (+/-)
Cutting / digging width	1500mm
Digging (flailing) depth	200mm Max.

**TRACKS**

Rubber	Standard	Working range up to 50 degrees
Rubber with spikes	Optional	Working range up to 65 degrees
Self-tightening	Standard	
Length (Axle to axle)	1192mm	

**REMOTE CONTROL**

Working range	1000 meters	
Frequency	863 – 870 MHz (CE certified)	
Battery	7.2 Volt, 750mAh, Ni-MH, rechargeable	Two with each unit
Proportional joysticks	Standard	

**PERFORMANCE**

Potentiometer Speed Control (0 to 100%)	1 <sup>st</sup> Gear (Low range) Forward & reverse 2 <sup>nd</sup> Gear (High range) Forward & reverse	0 to 2.2 MPH (0 to 3,5 Km/h) 0 to 5 MPH (0 to 7 Km/h)
---	---	--

**DIMENSIONS**

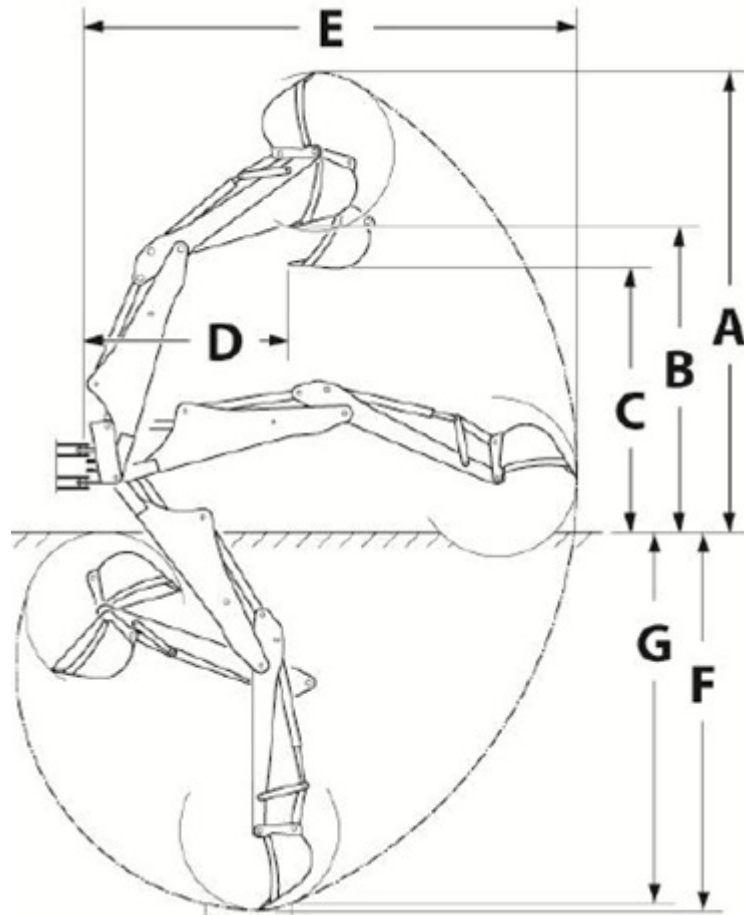
Flail		
Length		900 mm
Width		1940 mm
Height		1150 mm
Backhoe		
Length		600 mm
Width		900 mm
Height		1500 mm

**WEIGHTS**

Armtrac 20T (Base unit)	1150 kg
Flail	442 kg
Backhoe	315 kg
Manipulator	60 kg
Backhoe / Manipulator sub frame assembly	75 kg
Remote handset (Including battery)	≥ 500 grams



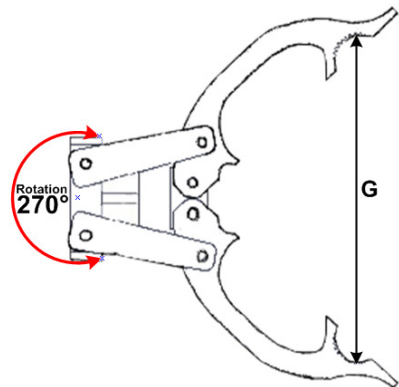
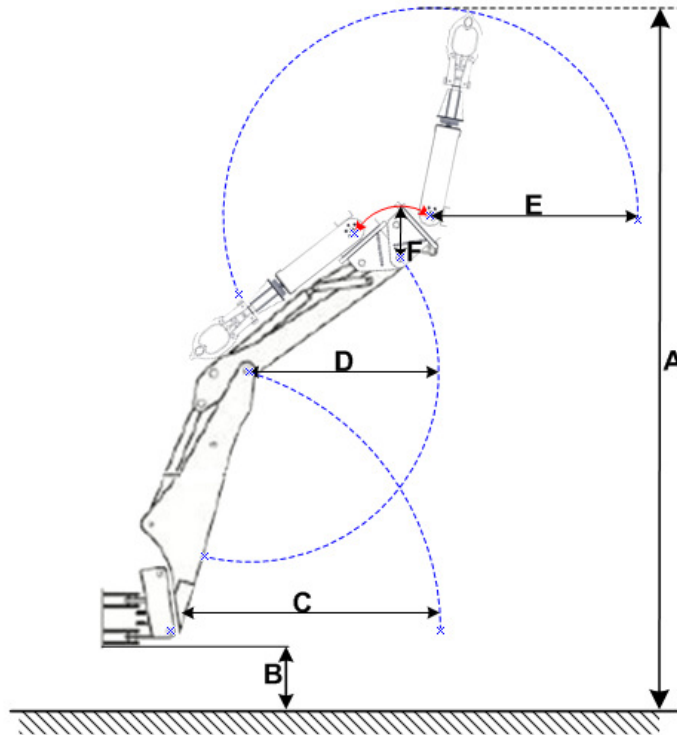
BACKHOE REACH RADII



A	Max. operating height	2600 mm
B	Max. loading height	1740 mm
C	Loading height (SAE)	1295 mm
D	Loading reach (SAE)	1110 mm
E	Reach from slew pivot (SAE)	2670 mm
F	Max. digging depth	1905 mm
G	2ft flat digging depth (SAE)	1875 mm



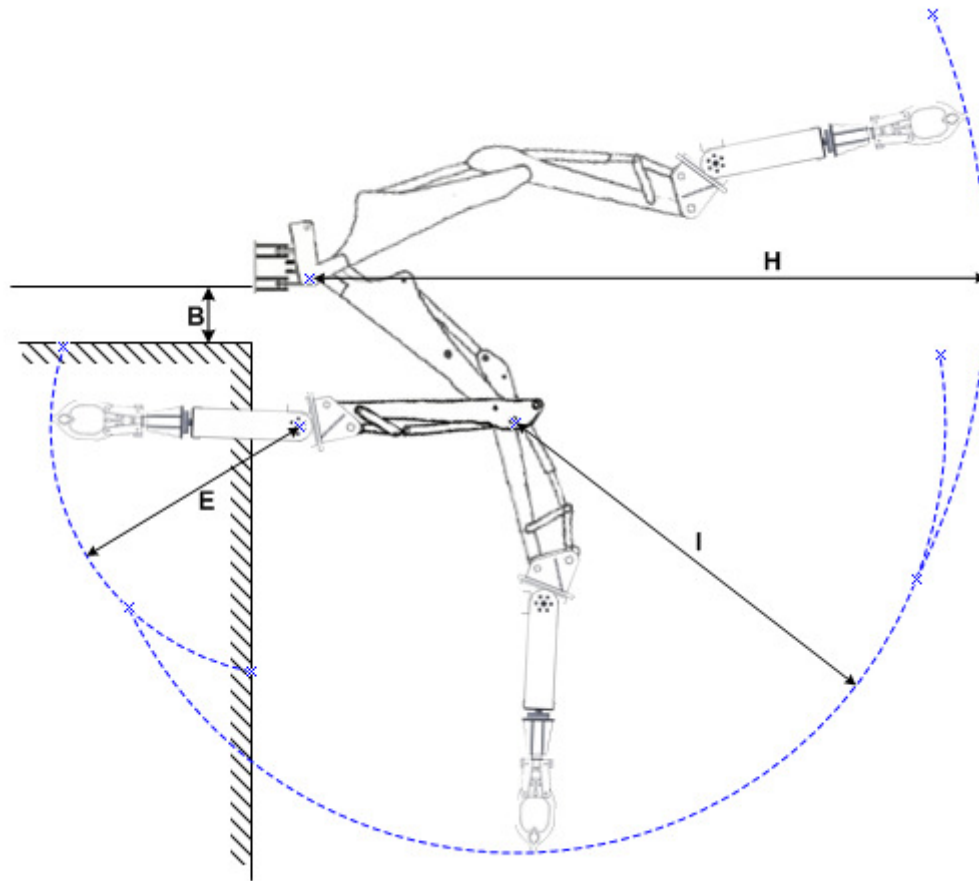
MANIPULATOR REACH - HEIGHTS



<b>A</b>	Max. operating height	3600 mm
<b>B</b>	Ground clearance (level surface)	300 mm
<b>C</b>	Boom radius	1200 mm
<b>D</b>	Dipper radius	900 mm
<b>E</b>	Manipulator radius	1150 mm
<b>F</b>	Angled mounting plate radius (Additional flexibility)	200 mm
<b>G</b>	Gripper (Maximum graspable width) 270° Rotation	400 mm



MANIPULATOR REACH - COVERTS



<b>H</b>	Maximum reach	3400 mm
<b>I</b>	Depth radius	2200 mm
<b>E</b>	Manipulator radius	1150 mm
<b>B</b>	Ground clearance	300 mm